

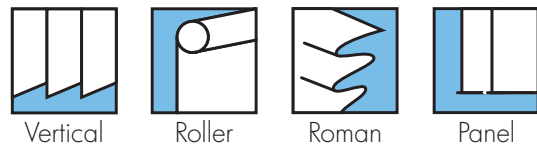
SENTRYSPC®

Performance Fabrics



ARCHITECTS SPECIFIERS CONTRACTORS

A10



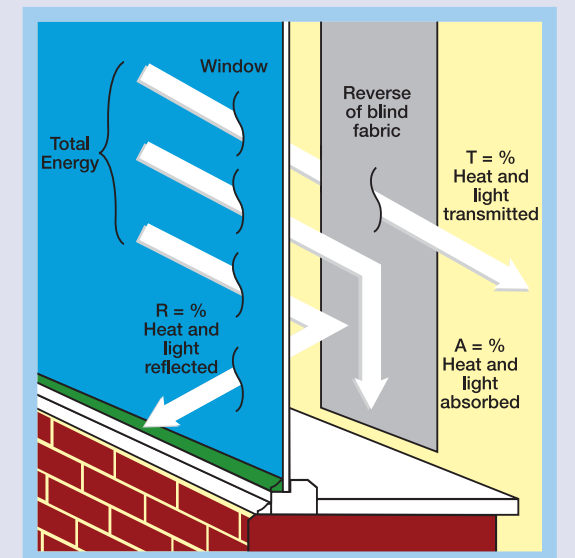
SOLAR, OPTICAL AND COLOUR FASTNESS PROPERTIES

SENTRY SPC®	SOLAR, OPTICAL PERFORMANCE CHART													
	SOLAR			OPTICAL			SC	CF	DIM out	UV block	SG	G TOT		
T _s	R _s	A _s	T _o	R _o	A _o	DG						TG	DG LE	
Cadet Blue	11	46	43	0	35	63	0.55	6+	4	100	0.401	0.422	0.425	0.469
Classic Red	19	48	33	2	39	59	0.53	6+	3	100	0.409	0.418	0.418	0.460
Jet Black	14	42	44	0	34	66	0.59	6+	4	100	0.428	0.441	0.438	0.483
Pale Chiffon	22	69	9	18	75	7	0.33	6+	2	100	0.301	0.313	0.327	0.364
Pearl Grey	17	63	20	8	62	30	0.39	6	3	100	0.327	0.344	0.356	0.395
Snow White	16	76	8	13	4	83	0.26	6+	3	100	0.244	0.267	0.290	0.327
Soft Beige	19	66	15	12	69	19	0.36	6+	3	100	0.308	0.325	0.339	0.377
Winchester	15	46	39	3	42	55	0.55	6+	3	100	0.414	0.425	0.424	0.468

T: % Transmittance R: % Reflectance A: % Absorption SC: Shading Co-efficient CF: Colour Fastness Dim out: 1= High light penetration, 4= Low light penetration, 5= Blackout
UV Block: the percentage of UV light blocked by the fabric GTOT: SG = Single Glazed, DG = Double Glazed, TG = Triple Glazed, DG LE = Double Glazed low Emissivity.

SHADING CO-EFFICIENT

The solar heat gain with the blind at the window divided by the solar heat gain with no blind at the window. The lower the shading co-efficient, therefore, the higher the efficiency of the fabric. The test results in the table above have been achieved using a single 6mm glass glazing system.



FIRE PROTECTION

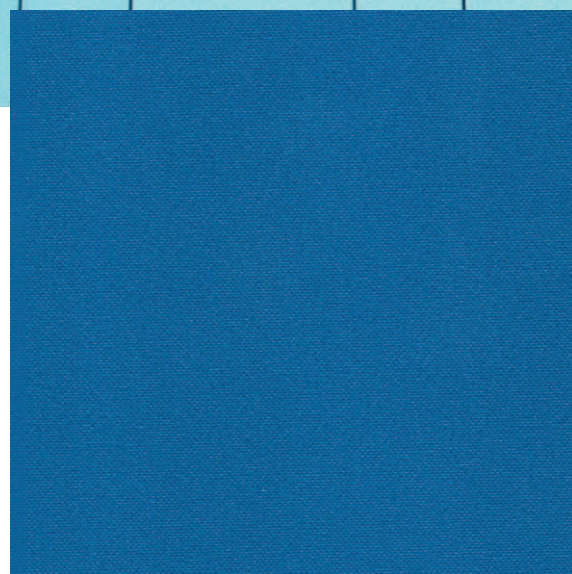
Sentry SPC® meets FR standard BS 5867 Part 2 Type B. Further information is available on request.

Blinds with Louvolite SPC® fabrics supplied by:

CI/SfB 1976 reference by SfB Agency		
(76.7)	x	

SENTRYSPC®

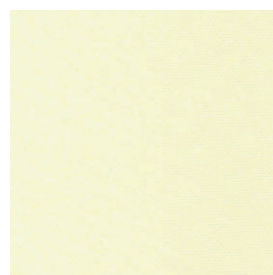
Performance Fabrics



cadet blue



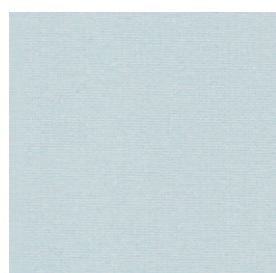
snow white



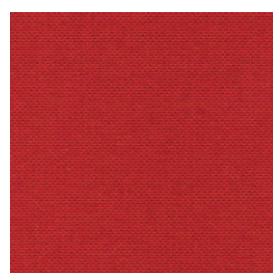
pale chiffon



soft beige



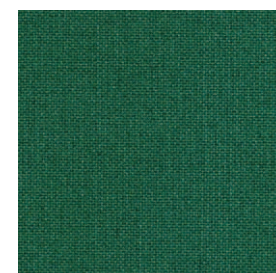
pearl grey



classic red



jet black



winchester green



vertical blind



panel blind



roller blind



roman blind



solar protective coating



anti-glare fabric - with advanced light reflecting properties



flame retardant



dim out



wipe clean



machine washable (vertical blind fabrics only)



Greenshield



COLOUR RANGE	8
LOUVRE WIDTHS AVAILABLE	89mm (3½") 127mm (5") other widths available on request
ROMAN/ROLLER BLIND WIDTH	1.83m (72")
FABRIC COMPOSITION	100% polyester
FABRIC WEIGHTS	155g/m ² (4.6oz/yd ²)
FLAMMABILITY STANDARDS	Complies with BS 5867 (Part 2, Type B)
COLOUR FASTNESS	Tested in accordance with BS EN ISO 105-B01:1999
G TOT	A measure of total solar energy that passes through the glazing system and the blind fabric.

GREENSHIELD:	Fabrics featuring the Greenshield mark have been tested to confirm no harmful VOC's or hazardous substances will be released to the environment in quantities that are recognised as potentially dangerous to occupants of dwellings or buildings.
CLEANING:	Machine washable (vertical blind fabrics only) See manufacturer's instructions tested in accordance with BS EN 26330:1994 method 7a
AVAILABILITY	Ex-stock
FABRIC SAMPLES	Available on request

Colours reproduced here may vary from the actual colours due to the limitations of the printing process. Great care has been taken to ensure that the fabric swatches and the information supplied are correct, however specifiers and customers are advised to check the suitability of materials before use.