

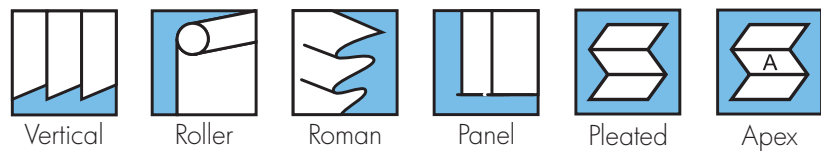
REGENCYSPC®

Performance Fabrics



ARCHITECTS SPECIFIERS CONTRACTORS

A16



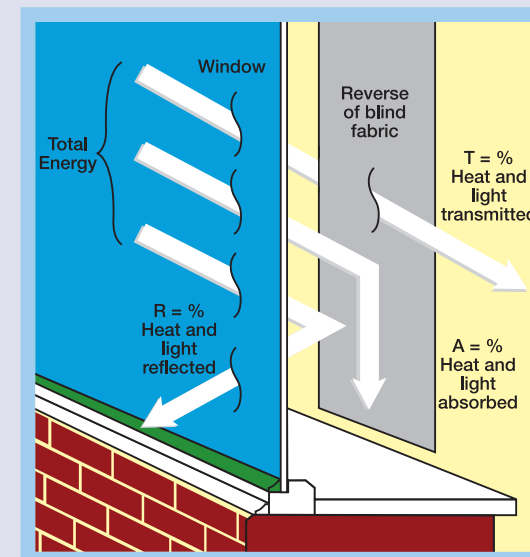
SOLAR, OPTICAL AND COLOUR FASTNESS PROPERTIES

REGENCY SPC®	SOLAR, OPTICAL PERFORMANCE CHART													
	SOLAR			OPTICAL			SC	CF	DIM out	UV block	SG	G TOT		
T _s	R _s	A _s	T _o	R _o	A _o	DG						TG	DG LE	
Cream	22	70	8	19	76	5	0.32	6+	2	100	0.289	0.304	0.320	0.357
Honey	19	68	13	13	73	14	0.34	6+	3	100	0.296	0.313	0.329	0.366
Oyster	20	70	10	16	75	9	0.32	6+	2	100	0.289	0.305	0.322	0.359
Taupe	19	68	13	12	71	17	0.34	6+	3	100	0.297	0.315	0.331	0.369
White	22	69	9	20	75	5	0.33	6+	2	100	0.298	0.311	0.325	0.362
Willow	20	68	12	15	72	13	0.34	6+	2	100	0.302	0.317	0.331	0.369

T: % Transmittance R: % Reflectance A: % Absorption SC: Shading Co-efficient CF: Colour Fastness Dim out: 1= High light penetration, 4= Low light penetration, 5= Blackout
 UV Block: the percentage of UV light blocked by the fabric GTOT: SG = Single Glazed, DG = Double Glazed, TG = Triple Glazed, DG LE = Double Glazed low Emissivity.

SHADING CO-EFFICIENT

The solar heat gain with the blind at the window divided by the solar heat gain with no blind at the window. The lower the shading co-efficient, therefore, the higher the efficiency of the fabric. The test results in the table above have been achieved using a single 6mm glass glazing system.

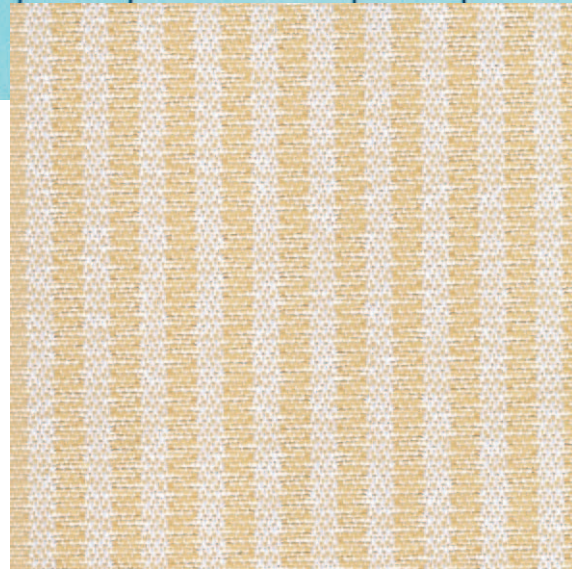


FIRE PROTECTION

Regency SPC® meets FR standard BS 5867 Part 2 Type B. Further information is available on request.

Blinds with Louvolite SPC® fabrics supplied by:

CI/SfB 1976 reference by SfB Agency		
(76.7)	X	



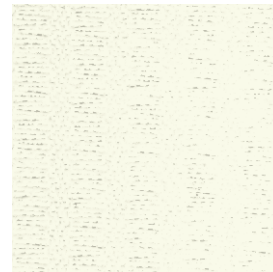
honey



white



oyster









cream



taupe



willow

-  vertical blind
-  panel blind
-  roller blind
-  pleated blind
-  roman blind
-  apex blind
-  flame retardant
-  wipe clean
-  solar protective coating
-  anti-glare fabric - with advanced light reflecting properties
-  machine washable (vertical blind fabrics only)
-  Greenshield



COLOUR RANGE	6
LOUVRE WIDTHS AVAILABLE	89mm (3½") 127mm (5") other widths available on request
ROMAN/ROLLER BLIND WIDTH	2m (78.7")
PLEAT SIZE	20/25/50mm
FABRIC COMPOSITION	100% polyester
FABRIC WEIGHTS	191g/m ² (5.6oz/yd ²)
FLAMMABILITY STANDARDS	Complies with BS 5867 (Part 2, Type B)
COLOUR FASTNESS	Tested in accordance with BS EN ISO 105-B01:1999

GREENSHIELD:	Fabrics featuring the Greenshield mark have been tested to confirm no harmful VOC's or hazardous substances will be released to the environment in quantities that are recognised as potentially dangerous to occupants of dwellings or buildings.
G TOT	A measure of total solar energy that passes through the glazing system and the blind fabric.
CLEANING:	Machine washable (vertical blind fabrics only) See manufacturer's instructions tested in accordance with BS EN 26330:1994 method 7a
AVAILABILITY	Ex-stock
FABRIC SAMPLES	Available on request

Colours reproduced here may vary from the actual colours due to the limitations of the printing process. Great care has been taken to ensure that the fabric swatches and the information supplied are correct, however specifiers and customers are advised to check the suitability of materials before use.