

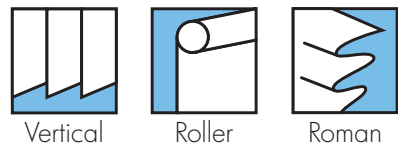
NOCTURNE™

Performance Fabrics



ARCHITECTS SPECIFIERS CONTRACTORS

A11



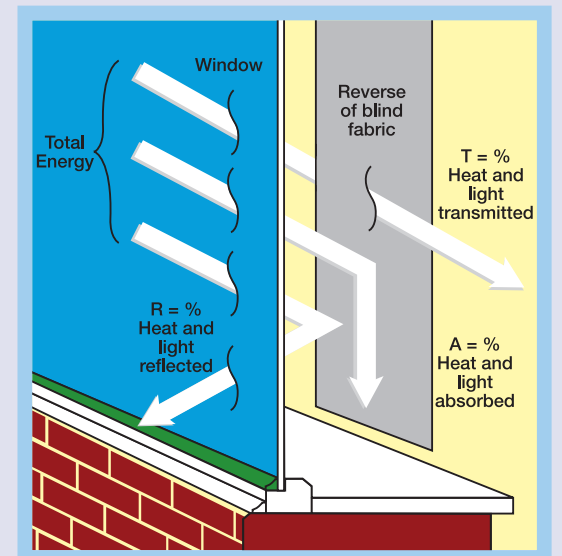
SOLAR, OPTICAL AND COLOUR FASTNESS PROPERTIES

NOCTURNE™	SOLAR, OPTICAL PERFORMANCE CHART													
	SOLAR			OPTICAL			SC	CF	DIM out	UV Block	SG	G TOT		
T _s	R _s	A _s	T _o	R _o	A _o	DG						TG	DG LE	
Black	0	4	96	0	4	96	0.96	6	5	100	0.570	0.581	0.544	0.599
Canary	0	58	42	0	59	41	0.44	6	5	100	0.299	0.343	0.364	0.405
Cream	0	73	27	0	82	18	0.29	6	5	100	0.212	0.253	0.284	0.325
Ecru	0	63	37	0	69	31	0.39	6	5	100	0.276	0.316	0.338	0.378
Flint	0	29	71	0	31	69	0.72	6	5	100	0.448	0.478	0.467	0.514
Green	0	16	84	0	15	85	0.84	6+	5	100	0.314	0.536	0.512	0.564
Grey	0	29	71	0	31	69	0.72	6	5	100	0.448	0.478	0.467	0.514
Mocha	0	47	53	0	33	67	0.54	6	5	100	0.354	0.403	0.415	0.461
Navy	0	9	91	0	6	94	0.91	6+	5	100	0.548	0.563	0.532	0.586
Red	0	36	64	0	14	86	0.65	6	5	100	0.409	0.451	0.452	0.498
Royal	0	31	69	0	11	89	0.70	6	5	100	0.435	0.476	0.472	0.525
White	0	69	31	0	78	22	0.33	6	5	100	0.241	0.279	0.305	0.345

T: % Transmittance R: % Reflectance A: % Absorption SC: Shading Co-efficient CF: Colour Fastness Dim out: 1= High light penetration, 4= Low light penetration, 5= Blockout
UV Block: the percentage of UV light blocked by the fabric GTOT: SG = Single Glazed, DG = Double Glazed, TG = Triple Glazed, DG LE = Double Glazed Low Emissivity.

SHADING CO-EFFICIENT

The solar heat gain with the blind at the window divided by the solar heat gain with no blind at the window. The lower the shading co-efficient, therefore, the higher the efficiency of the fabric. The test results in the table above have been achieved using a single 6mm glass glazing system.



FIRE PROTECTION

Nocturne™ meets FR standard BS 5867 Part 2 Type B. Further information is available on request.

Blinds with Louvolite Performance fabrics supplied by:

CI/SfB 1976 reference by SfB Agency		
(76.7)	X	



white



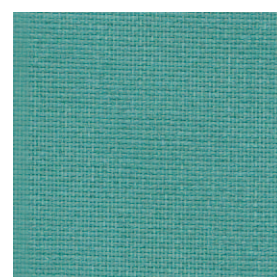
cream



ecru



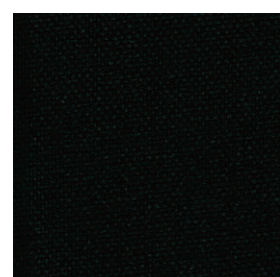
grey



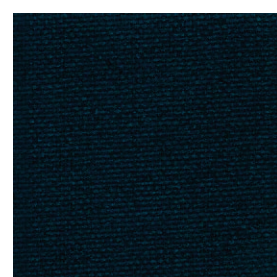
flint



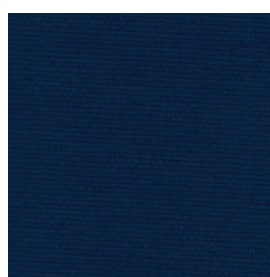
mocha



black



navy



royal



canary



red



green



NOCTURNE

Performance Fabrics



vertical blind



roller blind



roman blind



flame retardant



black out



wipe clean



Greenshield



COLOUR RANGE	12
LOUVRE WIDTHS AVAILABLE	89mm (3½") 127mm (5") other widths available on request
ROMAN/ROLLER BLIND WIDTH	2.10m (82")
FABRIC COMPOSITION	100% polyester
FABRIC WEIGHTS	370g/m ² (10.9oz/yd ²)
FLAMMABILITY STANDARDS	Complies with BS 5867 (Part 2, Type B)
COLOUR FASTNESS	Tested in accordance with BS EN ISO 105-B01:1999

GREENSHIELD:	Fabrics featuring the Greenshield mark have been tested to confirm no harmful VOC's or hazardous substances will be released to the environment in quantities that are recognised as potentially dangerous to occupants of dwellings or buildings.
CLEANING	Wipe clean
G TOT	A measure of total solar energy that passes through the glazing system and the fabric.
AVAILABILITY	Ex-stock
FABRIC SAMPLES	Available on request

Colours reproduced here may vary from the actual colours due to the limitations of the printing process. Great care has been taken to ensure that the fabric swatches and the information supplied are correct, however specifiers and customers are advised to check the suitability of materials before use.