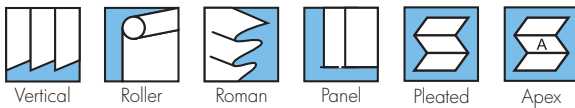


MADRIDSPC®

Performance Fabrics



ARCHITECTS SPECIFIERS CONTRACTORS



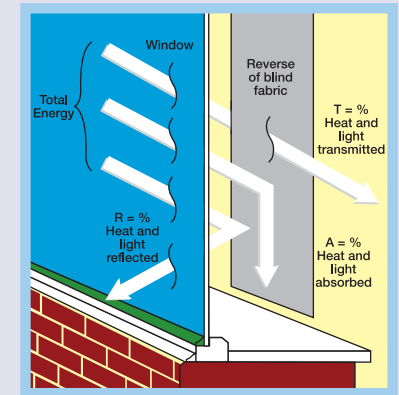
SOLAR, OPTICAL AND COLOUR FASTNESS PROPERTIES

MADRID SPC®	SOLAR, OPTICAL PERFORMANCE CHART													
	SOLAR			OPTICAL			SC	CF	DIM out	UV block	SG	DG	G ^{TOT}	
T _s	R _s	A _s	T _o	R _o	A _o	TG							TG	
Camel	17	70	13	11	74	15	0.32	6+	3	100	0.282	0.302	0.320	0.357
Canvas	19	69	12	15	75	10	0.35	6+	2	100	0.290	0.306	0.322	0.359
Chrome	18	70	12	10	73	17	0.32	6+	3	100	0.287	0.305	0.322	0.359
Clover	18	71	11	13	75	12	0.31	6+	3	100	0.281	0.299	0.317	0.354
Cornsilk	22	68	10	18	73	9	0.34	6+	2	100	0.304	0.317	0.330	0.368
Crystal	26	69	5	24	76	0	0.33	6+	2	100	0.306	0.315	0.326	0.363

T: % Transmittance R: % Reflectance A: % Absorption SC: Shading Co-efficient CF: Colour Fastness Dim out: 1= High light penetration, 4= Low light penetration, 5= Blackout UV Block: the percentage of UV light blocked by the fabric. G^{TOT}: SG = Single Glazed, DG = Double Glazed, TG = Triple Glazed, DG LE = Double Glazed Low Emissivity.

SHADING CO-EFFICIENT

The solar heat gain with the blind at the window divided by the solar heat gain with no blind at the window. The lower the shading co-efficient, therefore, the higher the efficiency of the fabric. The test results in the table above have been achieved using a single 6mm glass glazing system.

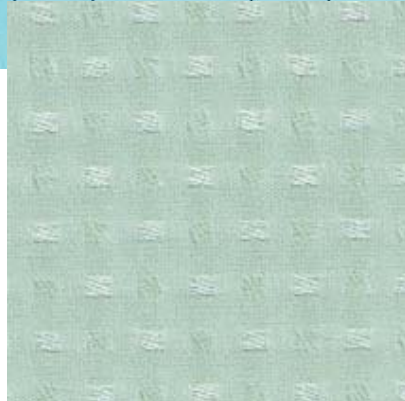


FIRE PROTECTION

Madrid SPC® meets FR standard BS 5867 Part 2 Type B. Further information is available on request.

Blinds with Louvolite SPC® fabrics can be supplied by:

CI/SfB 1976 reference by SfB Agency		
(76.7)	X	



clover



crystal



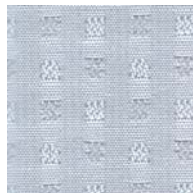
cornsilk



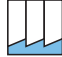

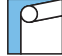





canvas



camel



chrome

-  vertical blind
-  panel blind
-  roller blind
-  pleated blind
-  roman blind
-  apex blind
-  flame retardant
-  wipe clean

 solar protective coating

 anti-glare fabric - with advanced light reflecting properties

 machine washable (vertical blind fabrics only)

 Greenshield



COLOUR RANGE	6
LOUVER WIDTHS AVAILABLE	89mm (3½") 127mm (5") other widths available on request
ROMAN / ROLLER BLIND WIDTH	2.00m (78")
PLEAT SIZE	20/25/50mm
FABRIC COMPOSITION	100% polyester
FABRIC WEIGHTS	200g/m² (5.9oz/yd²)
FLAMMABILITY STANDARDS	Complies with BS 5867 (Part 2, Type B)
COLOUR FASTNESS	Tested in accordance with BS EN ISO 105-B01:1999

GREENSHIELD:	Fabrics featuring the Greenshield mark have been tested to confirm no harmful VOC's or hazardous substances will be released to the environment in quantities that are recognised as potentially dangerous to occupants of dwellings or buildings.
CLEANING:	Machine washable (vertical blind fabrics only) See manufacturer's instructions tested in accordance with BS EN 26330:1994 method 7a
G TOT	A measure of total solar energy that passes through the glazing system and the blind fabric.
AVAILABILITY	Ex-stock
FABRIC SAMPLES	Available on request