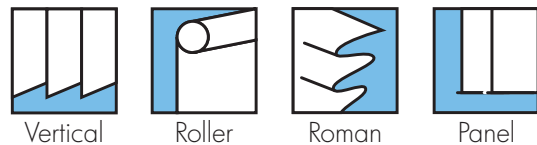


LUSTO

Performance fabrics

ARCHITECTS SPECIFIERS CONTRACTORS

A20



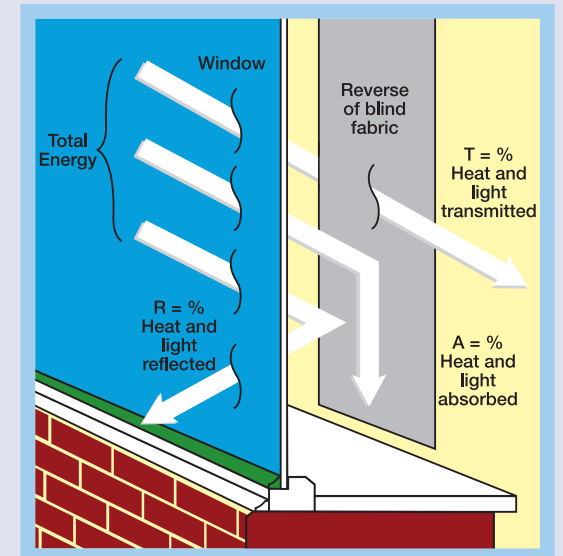
SOLAR, OPTICAL AND COLOUR FASTNESS PROPERTIES

LUSTO	SOLAR, OPTICAL PERFORMANCE CHART													
	SOLAR			OPTICAL			SC	CF	DIM out	UV block	SG	G TOT		
T _s	R _s	A _s	T _o	R _o	A _o	DG						TG	DG LE	
Clay	16	43	41	3	28	69	0.58	5	3	98	0.432	0.444	0.442	0.486
Coffee	15	36	49	1	16	83	0.65	4	3	99	0.457	0.474	0.466	0.513
Cornsilk	26	56	18	23	54	23	0.46	6	2	92	0.386	0.390	0.392	0.431
Gold	20	58	22	11	48	41	0.44	6	3	95	0.361	0.378	0.387	0.428
Mink	21	63	16	12	54	34	0.39	5/6	3	94	0.335	0.354	0.387	0.408
Opal	31	69	0	29	70	1	0.33	6	2	90	0.323	0.332	0.342	0.379

T: % Transmittance R: % Reflectance A: % Absorption SC: Shading Co-efficient CF: Colour Fastness Dim out: 1= High light penetration, 4= Low light penetration, 5= Blackout
 UV Block: the percentage of UV light blocked by the fabric GTOT: SG = Single Glazed, DG = Double Glazed, TG = Triple Glazed, DG LE = Double Glazed low Emissivity.

SHADING CO-EFFICIENT

The solar heat gain with the blind at the window divided by the solar heat gain with no blind at the window. The lower the shading co-efficient, therefore, the higher the efficiency of the fabric. The test results in the table above have been achieved using a single 6mm glass glazing system.



FIRE PROTECTION

Lusto meets FR standard BS 5867 Part 2 Type B. Further information is available on request.

Blinds with Louvolite Performance fabrics can be supplied by:

CI/SfB 1976 reference by SfB Agency		
(76.7)	X	

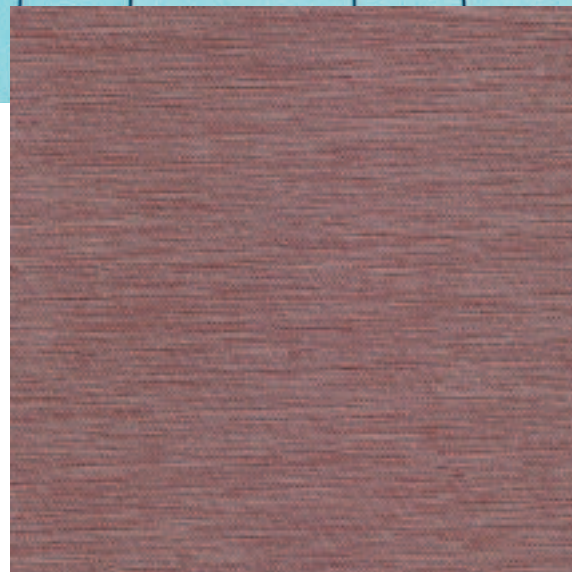
LUSTO

Performance Fabrics

CONTRACTORS

SPECIFIERS

ARCHITECTS



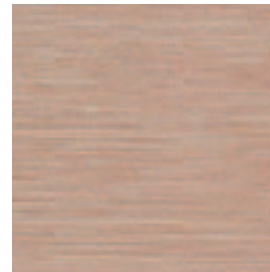
clay



opal



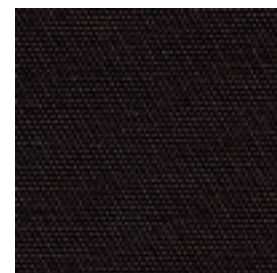
cornsilk



gold



mink



coffee



vertical blind



roller blind



panel blind



roman blind



wipe clean



machine washable
(vertical blind fabrics only)



flame retardant



Greenshield



COLOUR RANGE	6
LOUVRE WIDTHS AVAILABLE	89mm (3½") 127mm (5") other widths available on request
ROMAN/ROLLER BLIND WIDTH	2.3m (90.5")
FABRIC COMPOSITION	100% polyester
FABRIC WEIGHTS	195g/m ² (5.8oz/yd ²)
FLAMMABILITY STANDARDS	Complies with BS 5867 (Part 2, Type B)
COLOUR FASTNESS	Tested in accordance with BS EN ISO 105-B01:1999
G TOT	A measure of total solar energy that passes through the glazing system and the blind fabric.

GREENSHIELD:	Fabrics featuring the Greenshield mark have been tested to confirm no harmful VOC's or hazardous substances will be released to the environment in quantities that are recognised as potentially dangerous to occupants of dwellings or buildings.
CLEANING:	Machine washable (vertical blind fabrics only) See manufacturer's instructions tested in accordance with BS EN 26330:1994 method 7a
AVAILABILITY	Ex-stock
FABRIC SAMPLES	Available on request

Colours reproduced here may vary from the actual colours due to the limitations of the printing process. Great care has been taken to ensure that the fabric swatches and the information supplied are correct, however specifiers and customers are advised to check the suitability of materials before use.