

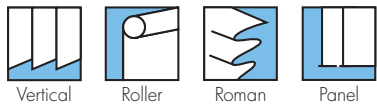
LOUVOTEX®FR

Performance Fabrics



ARCHITECTS SPECIFIERS CONTRACTORS

A17



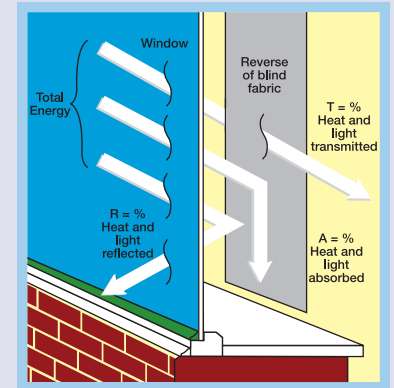
SOLAR, OPTICAL AND COLOUR FASTNESS PROPERTIES

LOUVOTEX® FR	SOLAR, OPTICAL PERFORMANCE CHART													
	SOLAR			OPTICAL			SC	CF	DIM out	UV block	SG	DG	G TOT TG	DG LE
	T _s	R _s	A _s	T _o	R _o	A _o								
Brown	21	27	52	5	11	84	0.74	6+	3	97	0.516	0.518	0.499	0.548
Charcoal	17	25	58	1	7	92	0.76	6+	3	100	0.512	0.522	0.503	0.554
Cream	36	54	10	34	56	10	0.48	6+	1	81	0.417	0.410	0.406	0.443
Flint	22	41	37	10	29	61	0.60	6+	3	95	0.457	0.460	0.453	0.496
Hemp	36	25	39	34	7	59	0.76	6+	1	81	0.497	0.491	0.476	0.521
Vellum	30	53	17	28	55	17	0.49	6	2	88	0.411	0.408	0.405	0.442
White	30	4	66	31	68	1	0.96	5	1	79	0.348	0.351	0.357	0.392

T: % Transmittance R: % Reflectance A: % Absorption SC: Shading Co-efficient CF: Colour Fastness DIM out: 1= High light penetration, 4= Low light penetration, 5= Blackout UV Block: the percentage of UV light blocked by the fabric G/TOT: SG = Single Glazed, DG = Double Glazed, TG = Triple Glazed, DG LE = Double Glazed Low Emissivity.

SHADING CO-EFFICIENT

The solar heat gain with the blind at the window divided by the solar heat gain with no blind at the window. The lower the shading co-efficient, therefore, the higher the efficiency of the fabric. The test results in the table above have been achieved using a single 6mm glass glazing system.

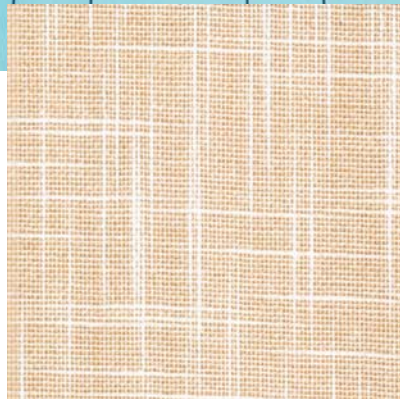


FIRE PROTECTION

Louvotex® FR meets FR standard BS 5867 Part 2 Type B. Further information is available on request.

Blinds with Louvolite Performance fabrics supplied by:

CI/SIB 1976 reference by SIB Agency		
(76.7)	X	



vellum



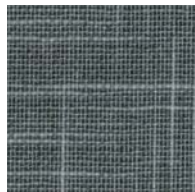
white



cream



hemp



flint



charcoal



brown



vertical blind



roller blind



panel blind



roman blind



flame retardant



Greenshield



COLOUR RANGE	7
LOUVRE WIDTHS AVAILABLE	89mm (3½") 127mm (5") other widths available on request
ROMAN/ROLLER BLIND WIDTH	1.83m (72")
FABRIC COMPOSITION	50% polyester 50% cotton
FABRIC WEIGHTS	235g/m ² (6.9oz/yd ²)
FLAMMABILITY STANDARDS	Complies with BS 5867 (Part 2, Type B)
COLOUR FASTNESS	Tested in accordance with BS EN ISO 105-B01:1999

GREENSHIELD:	Fabrics featuring the Greenshield mark have been tested to confirm no harmful VOC's or hazardous substances will be released to the environment in quantities that are recognised as potentially dangerous to occupants of dwellings or buildings.
G TOT	A measure of total solar energy that passes through the glazing system and the blind fabric.
AVAILABILITY	Ex-stock
FABRIC SAMPLES	Available on request

Colours reproduced here may vary from the actual colours due to the limitations of the printing process. Great care has been taken to ensure that the fabric swatches and the information supplied are correct, however specifiers and customers are advised to check the suitability of materials before use.