

GUARDIAN®

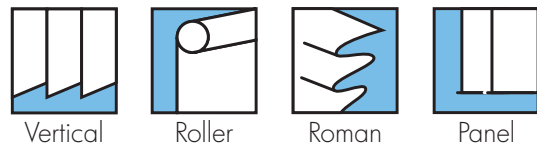
Performance Fabrics

incorporating Cold Coat Technology®



ARCHITECTS SPECIFIERS CONTRACTORS

A2



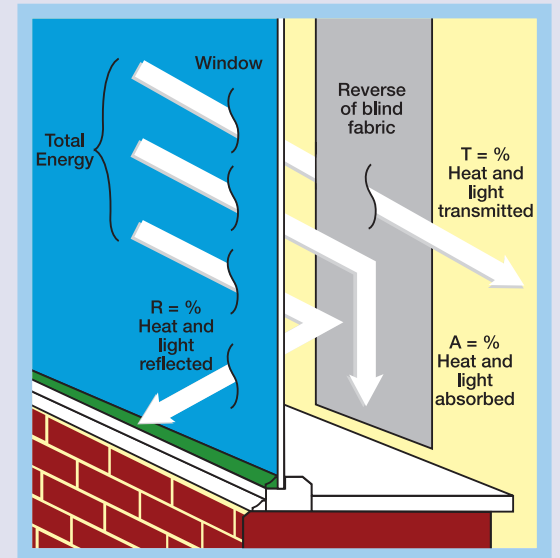
SOLAR, OPTICAL AND COLOUR FASTNESS PROPERTIES

GUARDIAN®	SOLAR, OPTICAL PERFORMANCE CHART													
	SOLAR			OPTICAL			SC	CF	DIM out	UV block	SG	DG	G TOT	
T _s	R _s	A _s	T _o	R _o	A _o	TG							DG LE	
Beige	9	55	36	2	45	53	0.47	6+	3	100	0.341	0.372	0.387	0.429
Chalk	16	71	13	14	78	8	0.31	5+	3	100	0.269	0.292	0.314	0.352
Cream	16	69	15	13	74	13	0.33	6	3	100	0.276	0.299	0.321	0.358
Crimson	8	39	53	0	12	88	0.62	6	4	100	0.434	0.457	0.456	0.504
Grey	8	53	39	1	40	59	0.49	6+	3	100	0.350	0.382	0.396	0.439
Hessian	13	66	21	8	67	25	0.36	6+	3	100	0.290	0.318	0.338	0.377
Laurel	7	33	60	0	19	81	0.68	6	4	100	0.441	0.472	0.468	0.520
Mocha	10	41	49	1	19	80	0.60	6+	3	100	0.416	0.445	0.447	0.495
Royal	8	33	59	0	10	90	0.68	6+	4	100	0.444	0.475	0.471	0.523
Sandstone	17	52	31	9	44	47	0.50	5+	3	100	0.382	0.399	0.406	0.447
Sky	10	47	43	2	32	66	0.55	6+	3	100	0.386	0.412	0.419	0.465
White	17	75	8	16	83	1	0.28	6+	2	100	0.241	0.264	0.287	0.326

T: % Transmittance R: % Reflectance A: % Absorption SC: Shading Co-efficient CF: Colour Fastness Dim out: 1= High light penetration, 4= Low light penetration, 5= Blackout
UV Block: the percentage of UV light blocked by the fabric GTOT: SG = Single Glazed, DG = Double Glazed, TG = Triple Glazed, DG LE = Double Glazed Low Emissivity.

SHADING CO-EFFICIENT

The solar heat gain with the blind at the window divided by the solar heat gain with no blind at the window. The lower the shading co-efficient, therefore, the higher the efficiency of the fabric. The test results in the table above have been achieved using a single 6mm glass glazing system.



FIRE PROTECTION

Guardian® meets FR standard BS 5867 Part 2 Type B. Further information is available on request.

Blinds with Louvolite Performance fabrics supplied by:

CI/SfB 1976 reference by SfB Agency		
(76.7)	X	

GUARDIAN®

Performance Fabrics

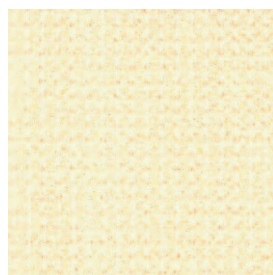
incorporating Cold Coat Technology®



white



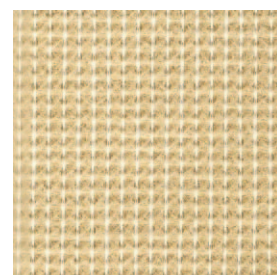
chalk



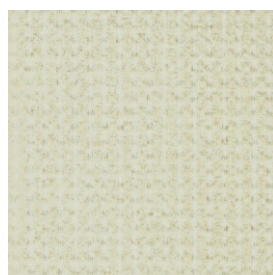
cream



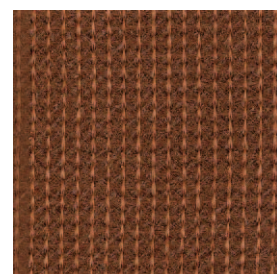
beige



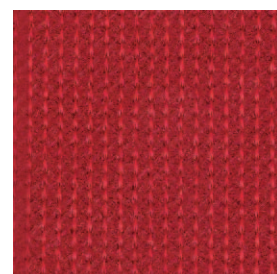
sandstone



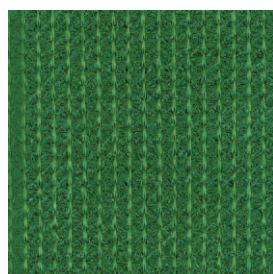
hessian



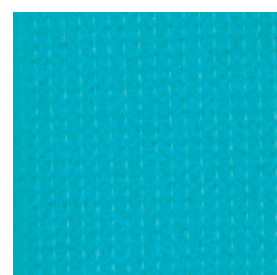
mocha



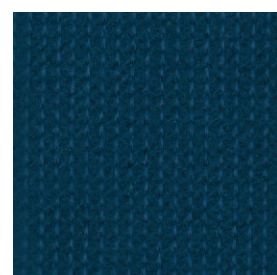
crimson



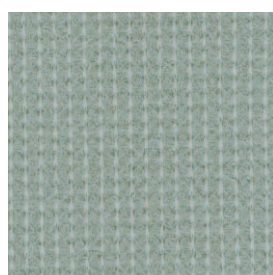
laurel



sky



royal



grey



vertical blind



roller blind



roman blind



panel blind



flame retardant



machine washable
(vertical blind fabrics only)



wipe clean




Greenshield



Ultra Fresh* Ultra-Fresh is a registered trademark of Thomson Research Associates, Canada.



COLOUR RANGE	12
LOUVRE WIDTHS AVAILABLE	89mm (3½") 127mm (5") other widths available on request
ROMAN / ROLLER BLIND WIDTH	2.00m (78")
FABRIC COMPOSITION	100% polyester
FABRIC WEIGHTS	280g/m ² (8.3oz/yd ²)
FLAMMABILITY STANDARDS	Complies with BS 5867 (Part 2, Type B)
COLOUR FASTNESS	Tested in accordance with BS EN ISO 105-B01:1999
COLD COAT TECHNOLOGY	Improved performance against total transmitted and radiated heat.

GREENSHIELD:	Fabrics featuring the Greenshield mark have been tested to confirm no harmful VOC's or hazardous substances will be released to the environment in quantities that are recognised as potentially dangerous to occupants of dwellings or buildings.
CLEANING:	Machine washable (vertical blind fabrics only) See manufacturer's instructions tested in accordance with BS EN 26330:1994 method 7a
G TOT	A measure of total solar energy that passes through the glazing system and the blind fabric.
AVAILABILITY	Ex-stock
FABRIC SAMPLES	Available on request
ULTRA-FRESH*	 An Ultra-Fresh* treated fabric that kills MRSA on contact. Also contains effective antibacterial and antifungal properties to preserve fabric freshness.

Colours reproduced here may vary from the actual colours due to the limitations of the printing process. Great care has been taken to ensure that the fabric swatches and the information supplied are correct, however specifiers and customers are advised to check the suitability of materials before use.