

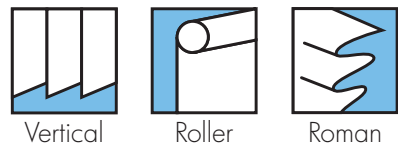
# DAPPLESPC+<sup>®</sup>

## Performance fabrics



ARCHITECTS SPECIFIERS CONTRACTORS

# A6



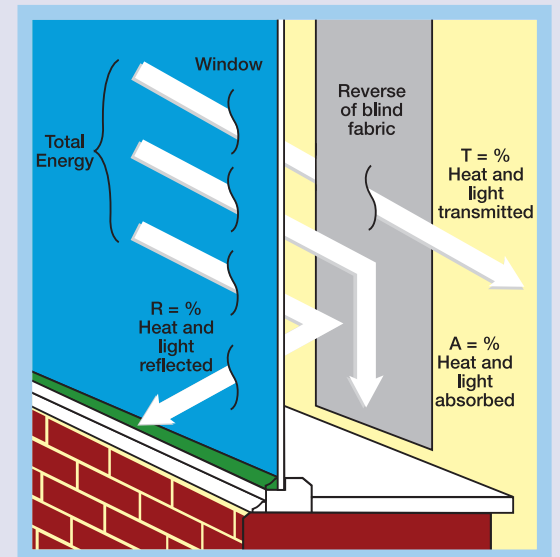
## SOLAR, OPTICAL AND COLOUR FASTNESS PROPERTIES

DAPPLE SPC+ <sup>®</sup>	SOLAR, OPTICAL PERFORMANCE CHART													
	SOLAR			OPTICAL			SC	CF	DIM out	UV block	SG	DG	G TOT	
T <sub>s</sub>	R <sub>s</sub>	A <sub>s</sub>	T <sub>o</sub>	R <sub>o</sub>	A <sub>o</sub>	TG							TG	
Blush	14	51	35	10	53	37	0.51	6+	3	100	0.377	0.392	0.397	0.437
Cream	15	52	33	13	55	32	0.50	6+	3	100	0.377	0.390	0.394	0.434
Ice	16	53	31	14	56	30	0.49	6+	3	100	0.376	0.387	0.391	0.431
Maize	13	48	39	8	49	43	0.54	6+	3	100	0.394	0.409	0.411	0.452
Royal	7	27	66	0	13	87	0.74	6+	4	100	0.473	0.497	0.484	0.535
Slate	11	43	46	3	39	58	0.58	6+	3	100	0.410	0.430	0.429	0.473

T: % Transmittance    R: % Reflectance    A: % Absorption    SC: Shading Co-efficient    CF: Colour Fastness    Dim out: 1= High light penetration, 4= Low light penetration, 5= Blackout  
 UV Block: the percentage of UV light blocked by the fabric    GTOT: SG = Single Glazed, DG = Double Glazed, TG = Triple Glazed, DG LE = Double Glazed low Emissivity.

### SHADING CO-EFFICIENT

The solar heat gain with the blind at the window divided by the solar heat gain with no blind at the window. The lower the shading co-efficient, therefore, the higher the efficiency of the fabric. The test results in the table above have been achieved using a single 6mm glass glazing system.



### FIRE PROTECTION

Dapple SPC+<sup>®</sup> meets FR standard BS 5867 Part 2 Type B. Further information is available on request.

Blinds with Louvolite SPC<sup>®</sup> fabrics can be supplied by:

CI/SfB 1976 reference by SfB Agency		
(76.7)	X	

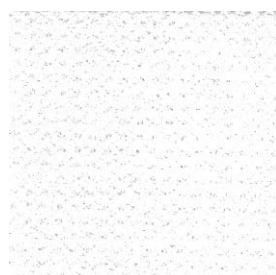


# DAPPLESPC+<sup>®</sup>

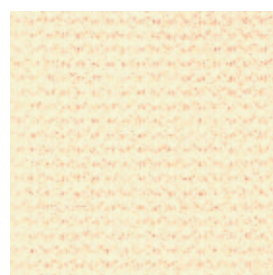
Performance Fabrics



cream



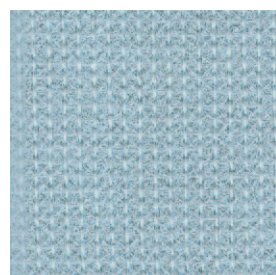
ice



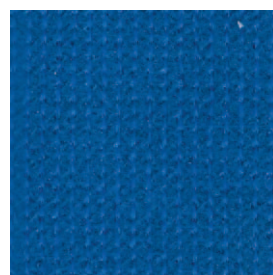
blush



maize



slate



royal



vertical blind



roller blind



roman blind



wipe clean



flame retardant



machine washable  
(vertical blind fabrics only)



solar protective coating



anti-glare fabric - with advanced  
light reflecting properties



Greenshield



<b>COLOUR RANGE</b>	6
<b>LOUVRE WIDTHS AVAILABLE</b>	89mm (3½") 127mm (5") other widths available on request
<b>ROMAN / ROLLER BLIND WIDTH</b>	2.00m (78")
<b>FABRIC COMPOSITION</b>	100% polyester
<b>FABRIC WEIGHTS</b>	270g/m <sup>2</sup> (8.0oz/yd <sup>2</sup> )
<b>FLAMMABILITY STANDARDS</b>	Complies with BS 5867 (Part 2, Type B)
<b>COLOUR FASTNESS</b>	Tested in accordance with BS EN ISO 105-B01:1999
<b>G TOT</b>	A measure of total solar energy that passes through the glazing system and the blind fabric.

<b>GREENSHIELD:</b>	Fabrics featuring the Greenshield mark have been tested to confirm no harmful VOC's or hazardous substances will be released to the environment in quantities that are recognised as potentially dangerous to occupants of dwellings or buildings.
<b>CLEANING:</b>	Machine washable (vertical blind fabrics only) See manufacturer's instructions tested in accordance with BS EN 26330:1994 method 7a
<b>AVAILABILITY</b>	Ex-stock
<b>FABRIC SAMPLES</b>	Available on request

Colours reproduced here may vary from the actual colours due to the limitations of the printing process. Great care has been taken to ensure that the fabric swatches and the information supplied are correct, however specifiers and customers are advised to check the suitability of materials before use.