

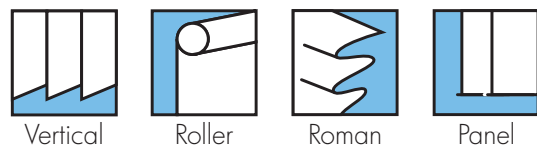
COLOURTEX

Performance Fabrics



ARCHITECTS SPECIFIERS CONTRACTORS

A21



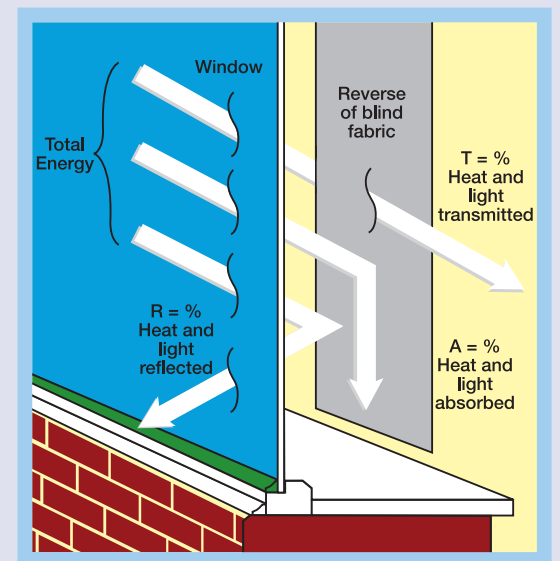
SOLAR, OPTICAL AND COLOUR FASTNESS PROPERTIES

COLOURTEX	SOLAR, OPTICAL PERFORMANCE CHART													
	SOLAR			OPTICAL			SC	CF	DIM out	UV block	SG	DG	G TOT	TG
T _s	R _s	A _s	T _o	R _o	A _o									
Almond	12	74	14	8	79	13	0.29	6+	3	100	0.239	0.269	0.296	0.334
Ash	8	60	32	1	50	49	0.42	6+	3	100	0.316	0.349	0.368	0.409
Azure	6	38	56	0	15	85	0.63	6+	4	100	0.416	0.451	0.453	0.504
Biscuit	10	66	24	3	65	32	0.36	6+	3	100	0.280	0.313	0.336	0.375
Brownie	8	50	42	0	35	65	0.52	6+	4	100	0.368	0.400	0.411	0.455
Cornflower	8	61	31	3	65	32	0.41	6+	3	100	0.309	0.341	0.360	0.403
Sage	7	58	35	1	54	45	0.44	6+	3	100	0.321	0.354	0.371	0.414
Toffee	8	60	32	1	53	46	0.42	6+	3	100	0.317	0.350	0.669	0.410
White	12	80	8	10	89	1	0.23	6+	3	100	0.202	0.232	0.261	0.301

T: % Transmittance R: % Reflectance A: % Absorption SC: Shading Co-efficient CF: Colour Fastness Dim out: 1= High light penetration, 4= Low light penetration, 5= Blackout UV Block: the percentage of UV light blocked by the fabric GTOT: SG = Single Glazed, DG = Double Glazed, TG = Triple Glazed, DG LE = Double Glazed Low Emissivity.

SHADING CO-EFFICIENT

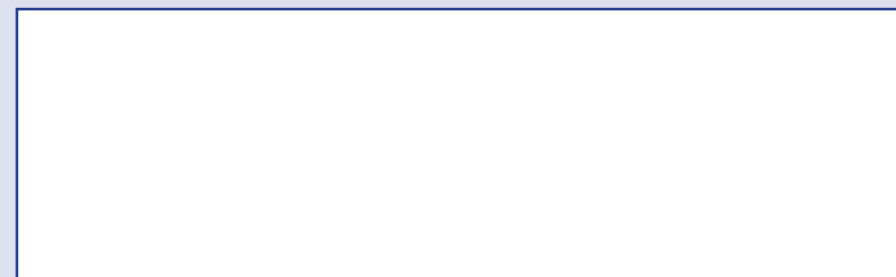
The solar heat gain with the blind at the window divided by the solar heat gain with no blind at the window. The lower the shading co-efficient, therefore, the higher the efficiency of the fabric. The test results in the table above have been achieved using a single 6mm glass glazing system.



FIRE PROTECTION

Colourtex meets FR standard BS 5867 Part 2 Type B. Further information is available on request.

Blinds with Louvolite Performance fabrics supplied by:



CI/SfB 1976 reference by SfB Agency		
(76.7)	X	

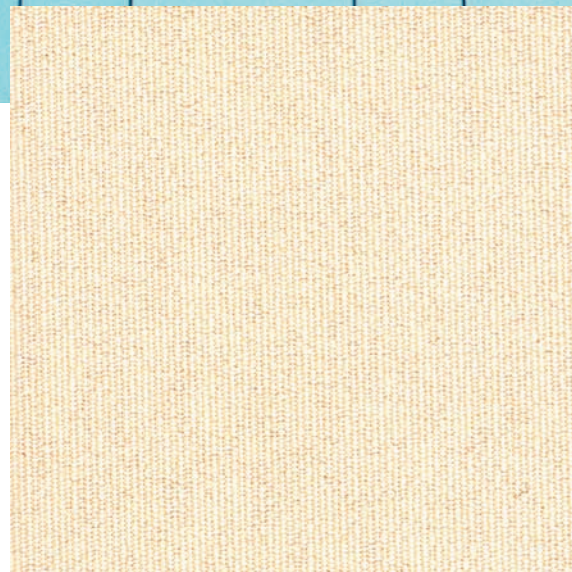
COLOURTEX

Performance Fabrics

CONTRACTORS

SPECIFIERS

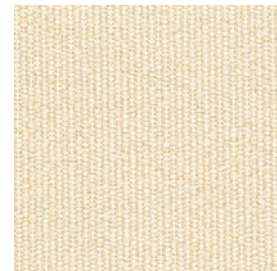
ARCHITECTS



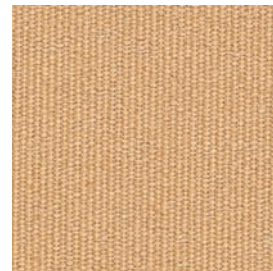
almond



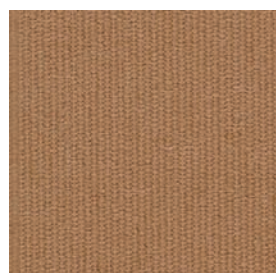
white



biscuit



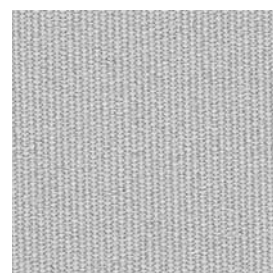
toffee



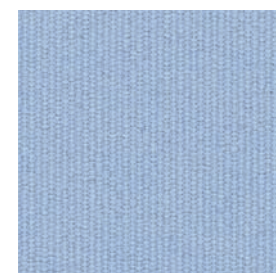
brownie



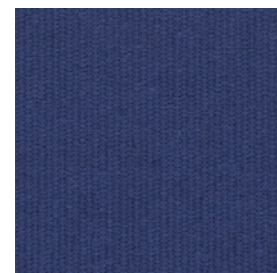
sage



ash



cornflower



azure



vertical blind



roller blind



panel blind



roman blind



flame retardant



dim out



wipe clean



Greenshield



COLOUR RANGE	9
LOUVRE WIDTHS AVAILABLE	89mm (3½") 127mm (5") other widths available on request
ROMAN/ROLLER BLIND WIDTH	2.10m (82")
FABRIC COMPOSITION	100% Polyester
FABRIC WEIGHTS	275g/m² (8.1oz/yd²)
FLAMMABILITY STANDARDS	Complies with BS 5867 (Part 2, Type B)
COLOUR FASTNESS	Tested in accordance with BS EN ISO 105-B01:1999

GREENSHIELD:	Fabrics featuring the Greenshield mark have been tested to confirm no harmful VOC's or hazardous substances will be released to the environment in quantities that are recognised as potentially dangerous to occupants of dwellings or buildings.
CLEANING:	Wipe clean
G TOT	A measure of total solar energy that passes through the glazing system and the blind fabric.
AVAILABILITY	Ex-stock
FABRIC SAMPLES	Available on request

Colours reproduced here may vary from the actual colours due to the limitations of the printing process. Great care has been taken to ensure that the fabric swatches and the information supplied are correct, however specifiers and customers are advised to check the suitability of materials before use.