

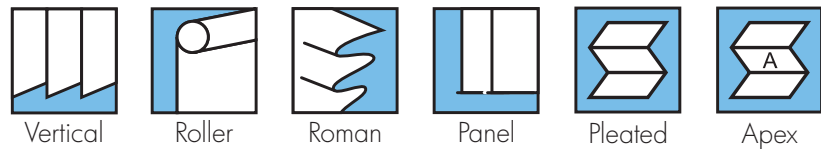
# BATIKSPC®

## Performance Fabrics



ARCHITECTS SPECIFIERS CONTRACTORS

# A8



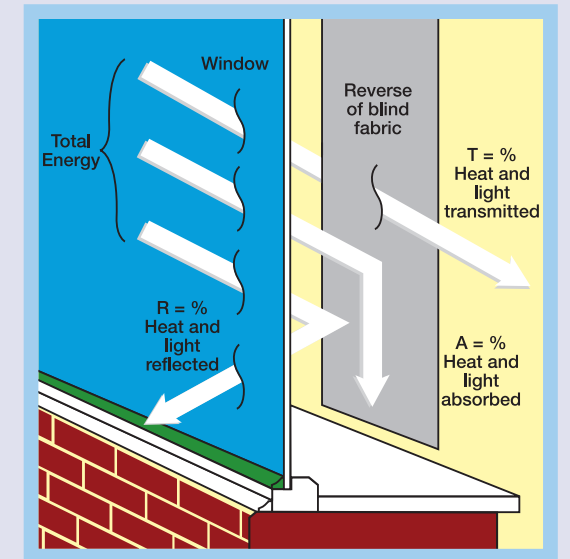
## SOLAR, OPTICAL AND COLOUR FASTNESS PROPERTIES

BATIK SPC®	SOLAR, OPTICAL PERFORMANCE CHART													
	SOLAR			OPTICAL			SC	CF	DIM out	UV block	SG	G TOT		
T <sub>s</sub>	R <sub>s</sub>	A <sub>s</sub>	T <sub>o</sub>	R <sub>o</sub>	A <sub>o</sub>	DG						TG	DG LE	
Cream	21	70	9	17	76	7	0.32	6+	2	100	0.292	0.307	0.322	0.359
Duckegg	20	69	11	14	75	11	0.33	6+	3	100	0.294	0.309	0.324	0.362
Gold	21	69	10	17	74	8	0.33	6+	2	100	0.295	0.309	0.323	0.360
Putty	20	69	11	15	74	11	0.33	6+	2	100	0.295	0.310	0.325	0.362
Sand	21	70	9	17	76	7	0.32	6+	2	100	0.292	0.306	0.321	0.358

T: % Transmittance R: % Reflectance A: % Absorption SC: Shading Co-efficient CF: Colour Fastness Dim out: 1= High light penetration, 4= Low light penetration, 5= Blackout  
UV Block: the percentage of UV light blocked by the fabric GTOT: SG = Single Glazed, DG = Double Glazed, TG = Triple Glazed, DG LE = Double Glazed low Emissivity.

### SHADING CO-EFFICIENT

The solar heat gain with the blind at the window divided by the solar heat gain with no blind at the window. The lower the shading co-efficient, therefore, the higher the efficiency of the fabric. The test results in the table above have been achieved using a single 6mm glass glazing system.



### FIRE PROTECTION

Batik SPC® meets FR standard BS 5867 Part 2 Type B. Further information is available on request.

Blinds with Louvolite SPC® fabrics can be supplied by:

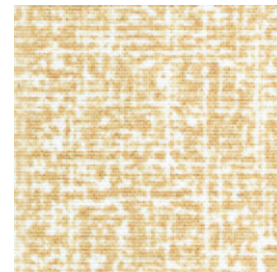
CI/SfB 1976 reference by SfB Agency			
(76.7)	X		



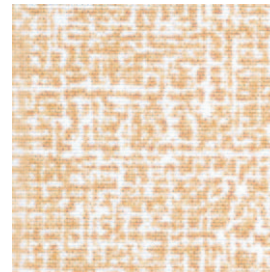
putty



cream









gold

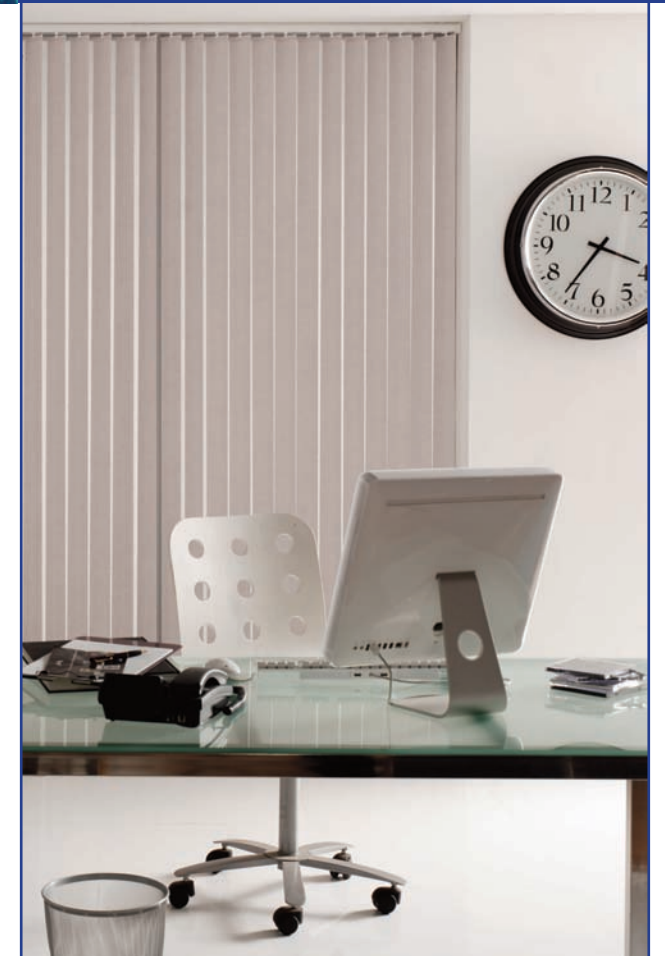


sand



duckegg

-  vertical blind
-  panel blind
-  roller blind
-  pleated blind
-  roman blind
-  apex blind
-  flame retardant
-  wipe clean
-  solar protective coating
-  anti-glare fabric - with advanced light reflecting properties
-  machine washable (vertical blind fabrics only)
-  Greenshield



<b>COLOUR RANGE</b>	5
<b>LOUVRE WIDTHS AVAILABLE</b>	89mm (3½") 127mm (5") other widths available on request
<b>ROMAN/ROLLER BLIND WIDTH</b>	1.81m (71")
<b>PLEAT SIZE</b>	20/25/50mm
<b>FABRIC COMPOSITION</b>	100% polyester
<b>FABRIC WEIGHTS</b>	204g/m² (6.0oz/yd²)
<b>FLAMMABILITY STANDARDS</b>	Complies with BS 5867 (Part 2, Type B)
<b>COLOUR FASTNESS</b>	Tested in accordance with BS EN ISO 105-B01:1999

<b>GREENSHIELD:</b>	Fabrics featuring the Greenshield mark have been tested to confirm no harmful VOC's or hazardous substances will be released to the environment in quantities that are recognised as potentially dangerous to occupants of dwellings or buildings.
<b>CLEANING:</b>	Machine washable (vertical blind fabrics only) See manufacturer's instructions tested in accordance with BS EN 26330:1994 method 7a
<b>G TOT</b>	A measure of total solar energy that passes through the glazing system and the fabric.
<b>AVAILABILITY</b>	Ex-stock
<b>FABRIC SAMPLES</b>	Available on request

Colours reproduced here may vary from the actual colours due to the limitations of the printing process. Great care has been taken to ensure that the fabric swatches and the information supplied are correct, however specifiers and customers are advised to check the suitability of materials before use.